

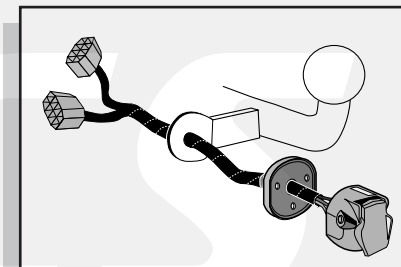


Montage-handleiding elektrokabelset voor  
trekhaak met 13-P contactdoos  
vlgs. DIN/ISO norm 11446

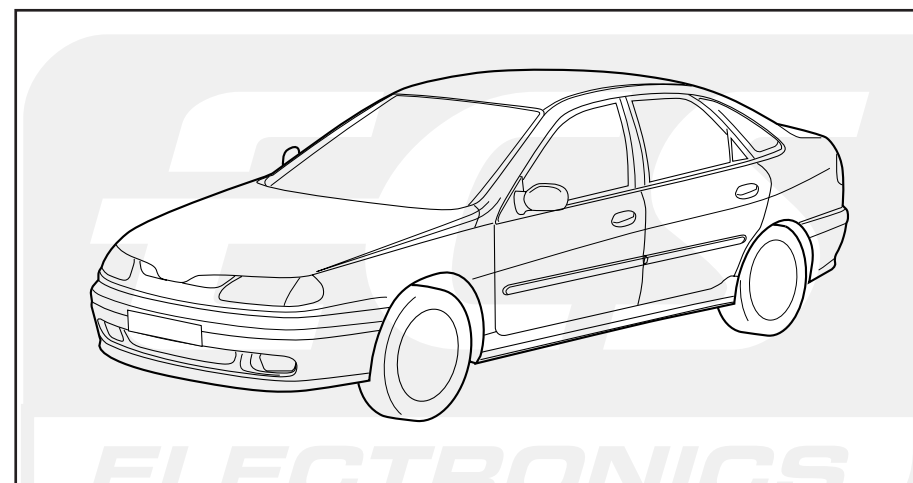
Fitting instructions electric wiringkit  
towbar with 13-P socket up to  
DIN/ISO norm 11446

Einbauanleitung Elektrosatz  
Anhängervorrichtung mit 13-P Steckdose  
lt. DIN/ISO Norm 11446

Instructions de montage du faisceau  
électrique pour crochet d'attelage  
conforme à la norme DIN/ISO 11446  
prise 13-P

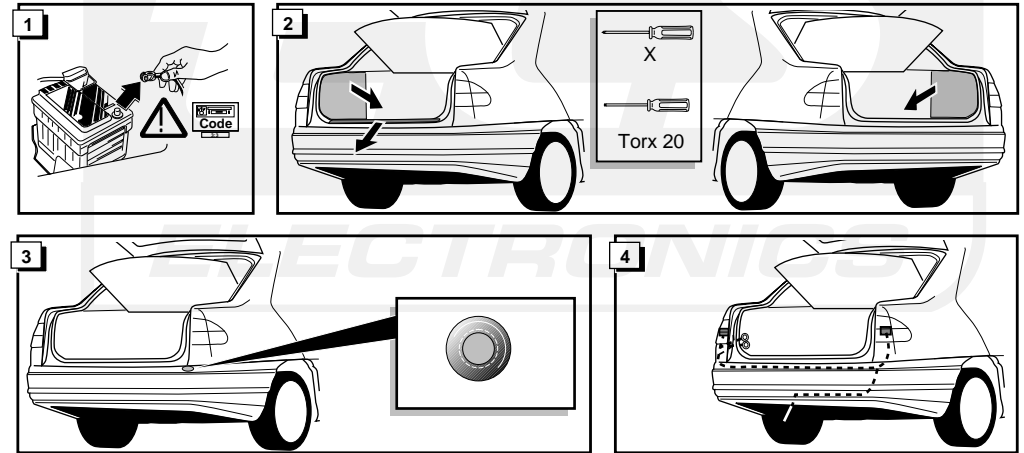
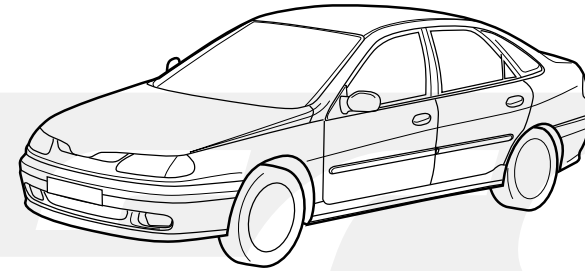


RENAULT LAGUNA 1994->

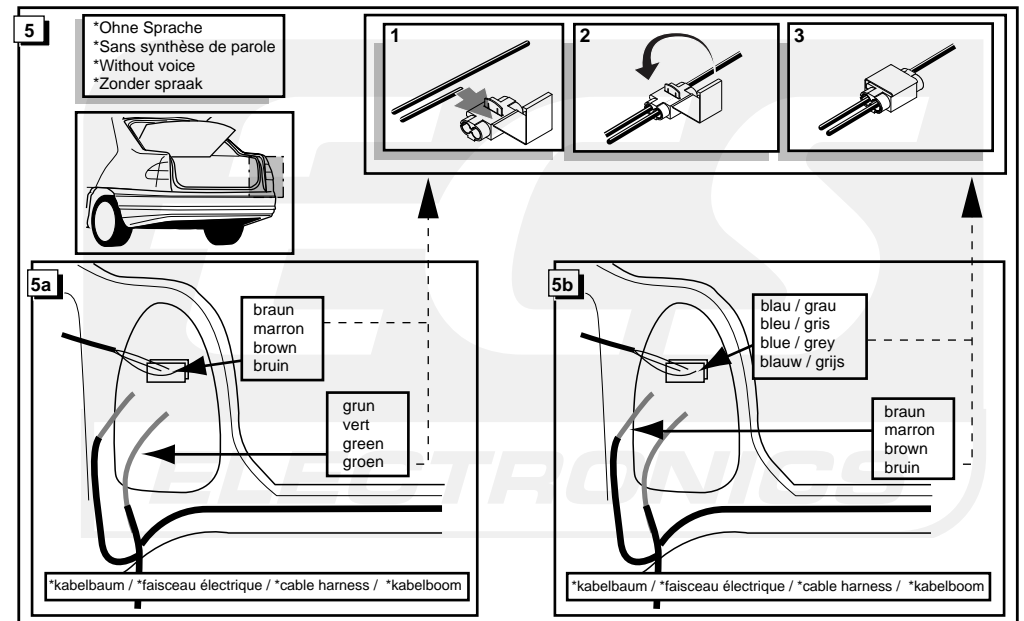


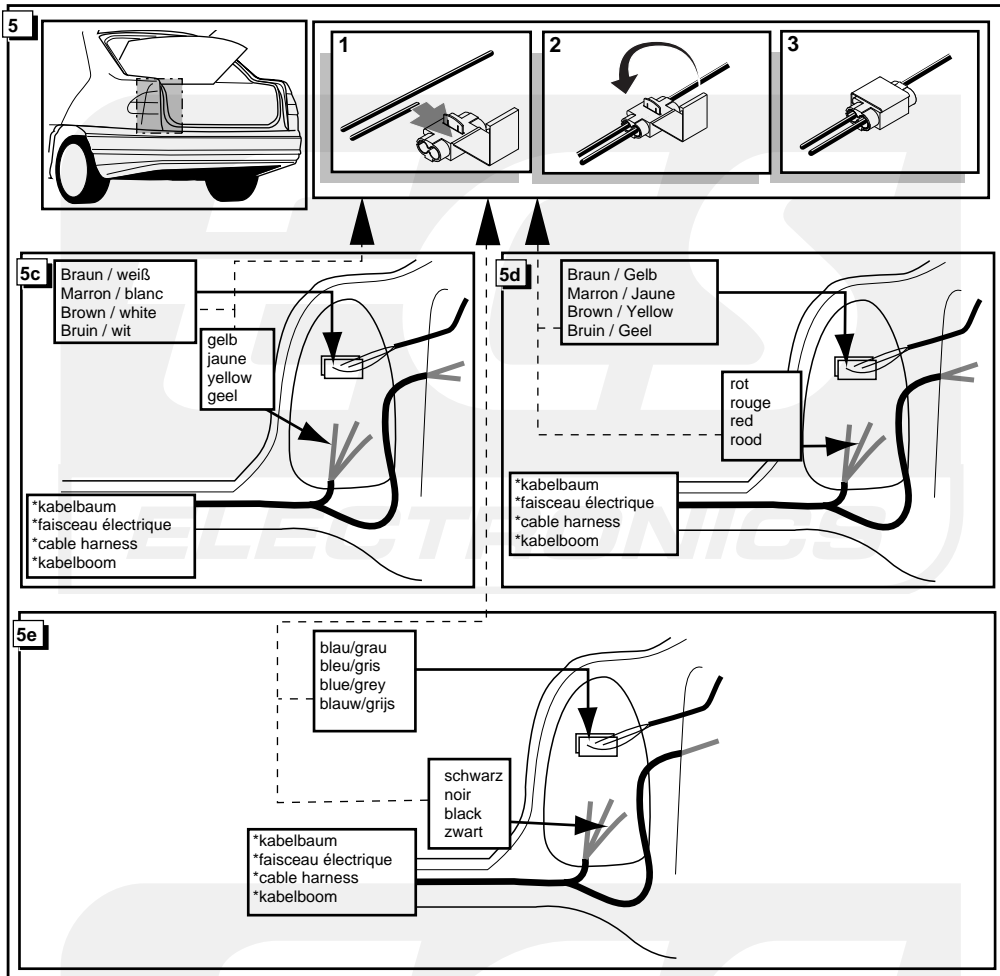
Bestel Nr.: REN-923-B





\* Fig. 5 ist für Fahrzeuge ohne Sprache.      \* Fig. 5 is for vehicles without voice.  
 \* Fig. 5 est pour véhicules sans synthèse de parole.      \* Fig. 5 is voor voertuigen zonder spraak.



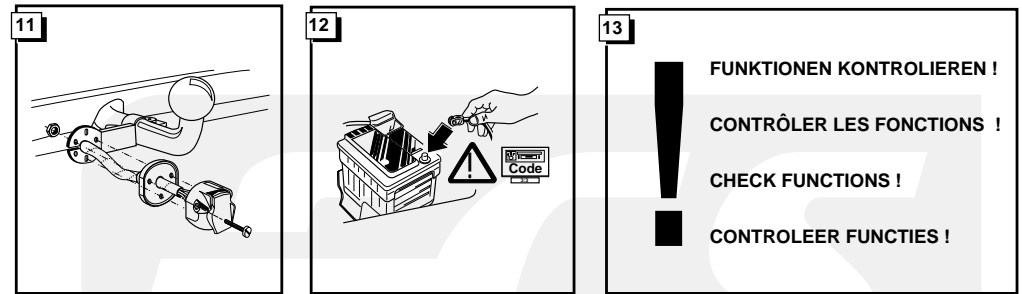
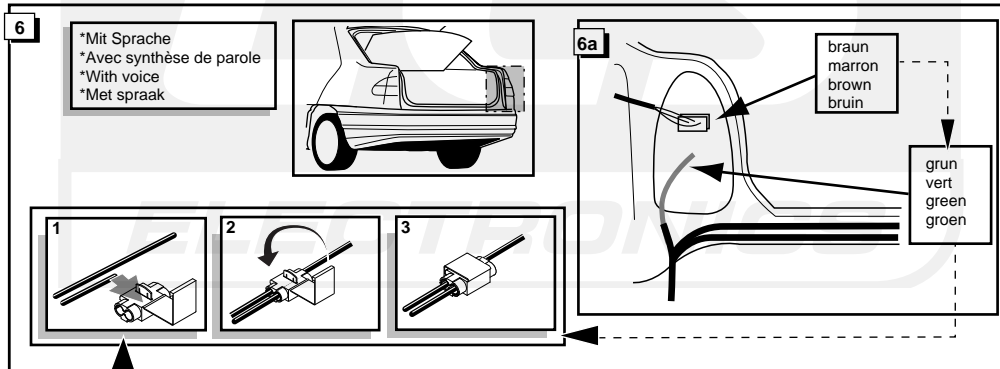


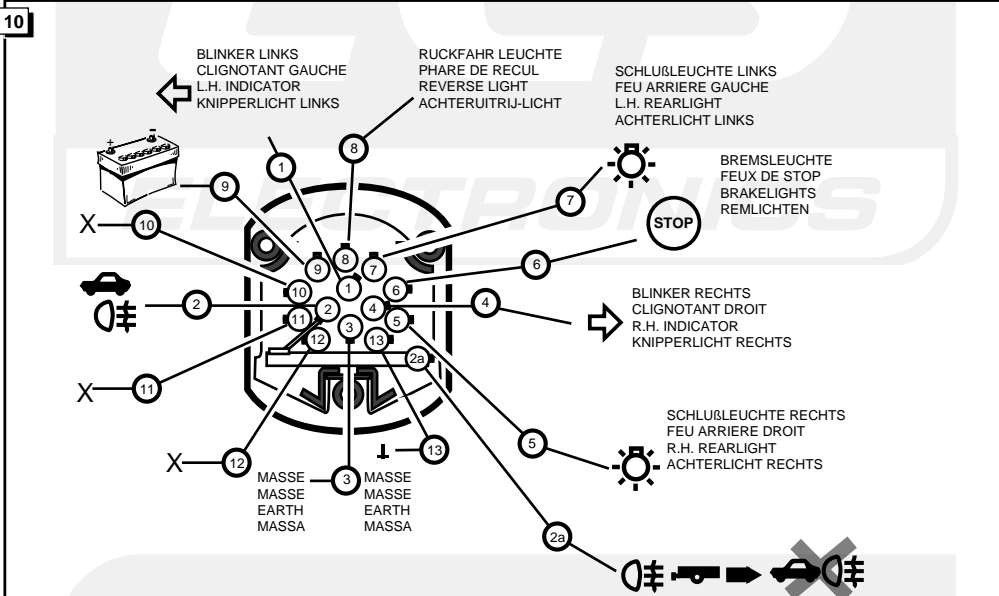
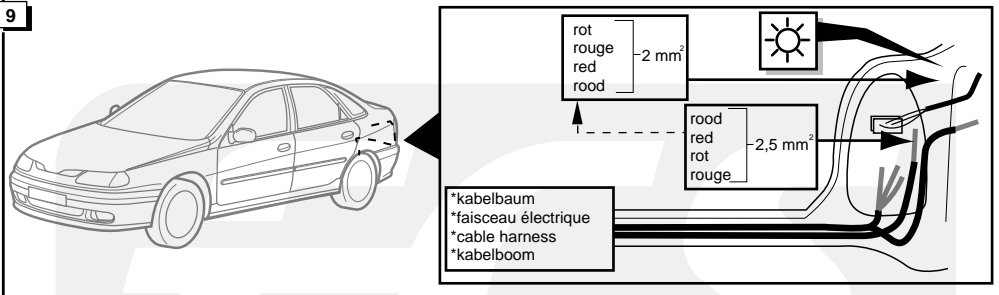
\* Fig. 6 ist für Fahrzeugen mit Sprache.

\* Fig. 6 est pour véhicules avec synthèse de parole.

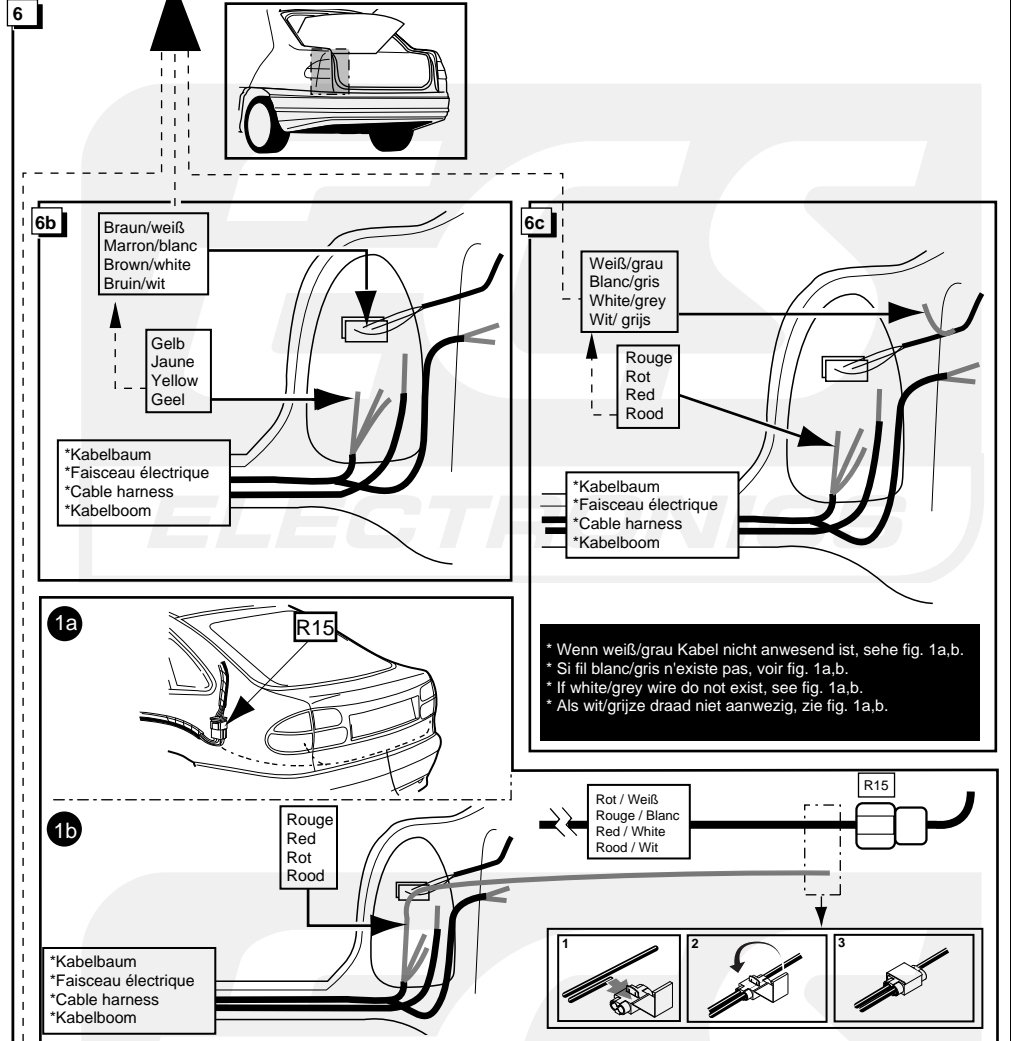
\* Fig. 6 is for vehicle with voice.

\* Fig. 6 is voor voertuigen met spraak.





	D	F	GB	NL
1/L	GELB	JAUNE	YELLOW	GEEL
2	BLAU	BLEU	BLUE	BLAUW
2a	GRAU	GRIS	GREY	GRIJS
3/31	WEIß	BLANC	WHITE	WIT
4/R	GRÜN	VERT	GREEN	GROEN
5/58-R	BRAUN	MARRON	BROWN	BRUIN
6/54	ROT	ROUGE	RED	ROOD
7/58-L	SCHWARZ	NOIR	BLACK	ZWART
8				
9	ROT	ROUGE	RED	ROOD
10				
11				
12				
13	WEIß	BLANC	WHITE	WIT



\* Wenn weiß/grau Kabel nicht anwesend ist, sehe fig. 1a,b.  
 \* Si fil blanc/gris n'existe pas, voir fig. 1a,b.  
 \* If white/grey wire do not exist, see fig. 1a,b.  
 \* Als wit/grijze draad niet aanwezig, zie fig. 1a,b.

